

# LOT 27 - \$599,900 HOUSE & LAND PACKAGE

4 2 1 LOT SIZE: 299.6m<sup>2</sup>

PINNACLE  
AT THE  
heart  
OF AUSTRAL  
PINNACLE



\*Artists Impression

PINNACLE | AT THE HEART OF AUSTRAL

1300 814 848 | PINNACLEAUSTRAL.COM.AU

## JANDSON HOMES HOUSE & LAND PACKAGE

4 2 1

**\$599,900**

### AREAS

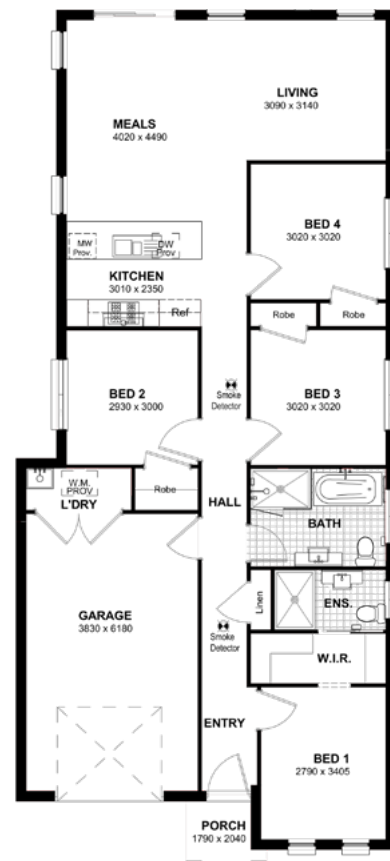
Living Areas	114.6m <sup>2</sup>
Garage	28.75m <sup>2</sup>
Porch	2.63m <sup>2</sup>
<b>TOTAL</b>	<b>145.98m<sup>2</sup></b>

### FEATURES

- Fixed Site and BASIX Costs
- Concrete Driveway & Separate Entry Path
- H1 Class Concrete Slab\*
- 2440mm High Ceilings
- Combination of Carpet and Tiling
- Remote Garage Door Opener
- Stainless Steel Kitchen Appliances
- 6 Months Maintenance Warranty  
(Twice the industry average)

\* If required

Ground Floor



# LOT 27 - \$599,900 HOUSE & LAND PACKAGE

4  2  1  LOT SIZE: 299.6m<sup>2</sup>



PINNACLE | AT THE HEART OF AUSTRAL

1300 814 848 | PINNACLEAUSTRAL.COM.AU

Ground Floor (Site Plan)

